

### Street Lighting Key:

Symbol	Description
	<b>Lighting Column:</b> Powys County Council proposed aluminium tubular lighting column of 6.0 metre nominal height. Column to be manufactured to ENV 1999-2-4 and ENV 1999-1-1. Columns shall be one-piece extruded aluminium complete with single flush fitting vandal resistant doors fitted with anti-vandal stainless steel M8-8mm centre pin recessed socket screw lock door bolts as the Aluminium Lighting Company or similar approved
	<b>Luminaire:</b> Philips Luma Gen2 Micro BL factory fitted with a rear shield
	<b>Mounting Type:</b> Post top mounted
	<b>Manufacturer Ref:</b> Luma Gen2 Micro BGP702 DW50 BL1 3000 20LED 5.2S CLO L90 730
	<b>Lumen Output:</b> 3.00km
	<b>Luminaire Wattage:</b> 18 w
	<b>Colour Temperature:</b> 3000K Warm White
	<b>Luminaire Tilt:</b> 0°
	<b>Luminous Intensity:</b> G3
	<b>Control Gear:</b> Electronic control gear to Powys County Council specification
	<b>Control Type:</b> 3 pin NEMA Photocell
	<b>Dimming Profile:</b> 35 lux on - 00:00 dim to 50% - 05:30 100% - 30 lux off
	<b>Supply:</b> DNO electrical supply connection
	<b>Primary Isolator:</b> DNO approved isolator
	<b>Secondary Isolator:</b> N/A
	<b>Lighting Column:</b> Powys County Council proposed aluminium tubular lighting column of 6.0 metre nominal height. Column to be manufactured to ENV 1999-2-4 and ENV 1999-1-1. Columns shall be one-piece extruded aluminium complete with single flush fitting vandal resistant doors fitted with anti-vandal stainless steel M8-8mm centre pin recessed socket screw lock door bolts as the Aluminium Lighting Company or similar approved
	<b>Luminaire:</b> Philips Luma Gen2 Micro BL factory fitted with a rear shield
	<b>Mounting Type:</b> Post top mounted
	<b>Manufacturer Ref:</b> Luma Gen2 Micro BGP702 DM10 BL1 3000 20LED 5.2S CLO L90 730
	<b>Lumen Output:</b> 3.00km
	<b>Luminaire Wattage:</b> 18 w
	<b>Colour Temperature:</b> 3000K Warm White
	<b>Luminaire Tilt:</b> 0°
	<b>Luminous Intensity:</b> G3
	<b>Control Gear:</b> Electronic control gear to Powys County Council specification
	<b>Control Type:</b> 3 pin NEMA Photocell
	<b>Dimming Profile:</b> 35 lux on - 00:00 dim to 50% - 05:30 100% - 30 lux off
	<b>Supply:</b> DNO electrical supply connection
	<b>Primary Isolator:</b> DNO approved isolator
	<b>Secondary Isolator:</b> N/A
	Existing lighting column to remain (contributory lighting purposes only)
<b>NC*</b>	<b>UNIT NUMBERING KEY:</b> Proposed lighting column identification number
<b>DNO</b>	<b>ELECTRICAL CONNECTION TYPE:</b> Proposed Distribution Network Operator electrical supply connection
	<b>LIGHTING ISOLUX CONTOUR KEY:</b> 4.5 Isolux contour line
	3.0 Isolux contour line
	0.6 Isolux contour line

**DRAWING TO BE PRINTED IN COLOUR TO ENABLE CORRECT IDENTIFICATION OF SYMBOLS, PROPOSED LIGHTING CABLES OR LINTYPES SHOWN**

**LIGHTING SCHEME DESIGNED IN ACCORDANCE WITH:**  
BS 5489-1:2020 & BS EN 13201-2:2015

**S/P RATIO:** N/A  
**MAINTENANCE FACTOR:** 0.90  
**LIGHTING CLASSIFICATION:** P5

**MIN. MAINTAINED AVERAGE ILLUMINANCE (EAV):** >3.00 LUX <4.50 LUX  
**MIN. ILLUMINANCE (EMIN):** >0.60 LUX  
**EMIN/EAV (UNIFORMITY):** >0.20 (20%)

**NO WORKS SHALL BE CONSTRUCTED UNTIL TECHNICAL APPROVAL HAS BEEN OBTAINED FROM THE LOCAL AUTHORITY BY THE DEVELOPER. SHOULD WORKS BE CONSTRUCTED WITHOUT APPROVAL THEY WILL BE ENTIRELY AT THE DEVELOPER'S RISK. UNLESS OTHERWISE STATED WITHIN THE QUOTATION PROVIDED BY MMA LIGHTING CONSULTANCY, MMA LIGHTING CONSULTANCY HAVE NOT SUBMITTED THIS DESIGN FOR TECHNICAL COMMENTS/APPROVAL.**

**NOTES:**

ALL STREET LIGHTING IMPROVEMENTS WORK TO BE CARRIED OUT TO THE CURRENT POWYS COUNTY COUNCIL (PCC) SPECIFICATIONS AND AGREEMENTS.

CONTRACTOR TO CONFIRM POSITION OF STATUTORY UNDERTAKERS PLANT BEFORE COMMENCEMENT OF THE WORKS.

DURING WORKS ALL TRAFFIC MANAGEMENT TO BE IN ACCORDANCE WITH CHAPTER 8 OF THE TRAFFIC SIGNS MANUAL.

PROPOSED LIGHTING COLUMNS ARE TO BE LOCATED TO THE REAR OF THE FOOTPATH WHEREVER POSSIBLE OR A MINIMUM OF 1000mm SETBACK FROM FRONT KERB EDGING.

ANY EXISTING OR PROPOSED TREES ARE TO BE CUTBACK, REMOVED OR RELOCATED TO AVOID INTERFERENCE WITH THE STREET LIGHTING LUMINAIRE OR PREVENT ANY FUTURE MAINTENANCE.

IF THE AUTHORITY OR CONTRACTOR EXPERIENCE ANY PART DISCREPANCY BETWEEN THIS DRAWING OR ANY OF THE DOCUMENTS RELATING TO THIS SITE THE AUTHORITY OR CONTRACTOR MUST CONTACT THE LIGHTING DESIGNER FOR CLARIFICATION.

UNIT NUMBERS SHOWN ARE FOR DESIGN IDENTIFICATION PURPOSES ONLY. FINAL COLUMN NUMBERING SHALL BE AGREED WITH THE OVERSEEING ORGANISATION.

**RESIDUAL DESIGN HAZARDS:**

LOCATION OF EXISTING UTILITY SERVICES TO BE DETERMINED ON SITE BY THE CONTRACTOR. INSTALLATION WORKS SHOULD BE CARRIED OUT IN ACCORDANCE WITH THE RELEVANT STANDARDS INCLUDING BS 7671, G3/91, HGS47 AND THE INSTITUTION OF LIGHTING PROFESSIONALS GENERAL PUBLICATION 03 (LP GP03).

1. OVERHEAD HIGH VOLTAGE ELECTRICITY CABLE

**CURRENT STATUTORY SERVICE RECORD PLANS SHOULD BE OBTAINED BY THE CONTRACTOR/OVERSEERING ORGANISATION BEFORE COMMENCEMENT OF ANY STREET LIGHTING INSTALLATION OR REMOVAL WORKS.**

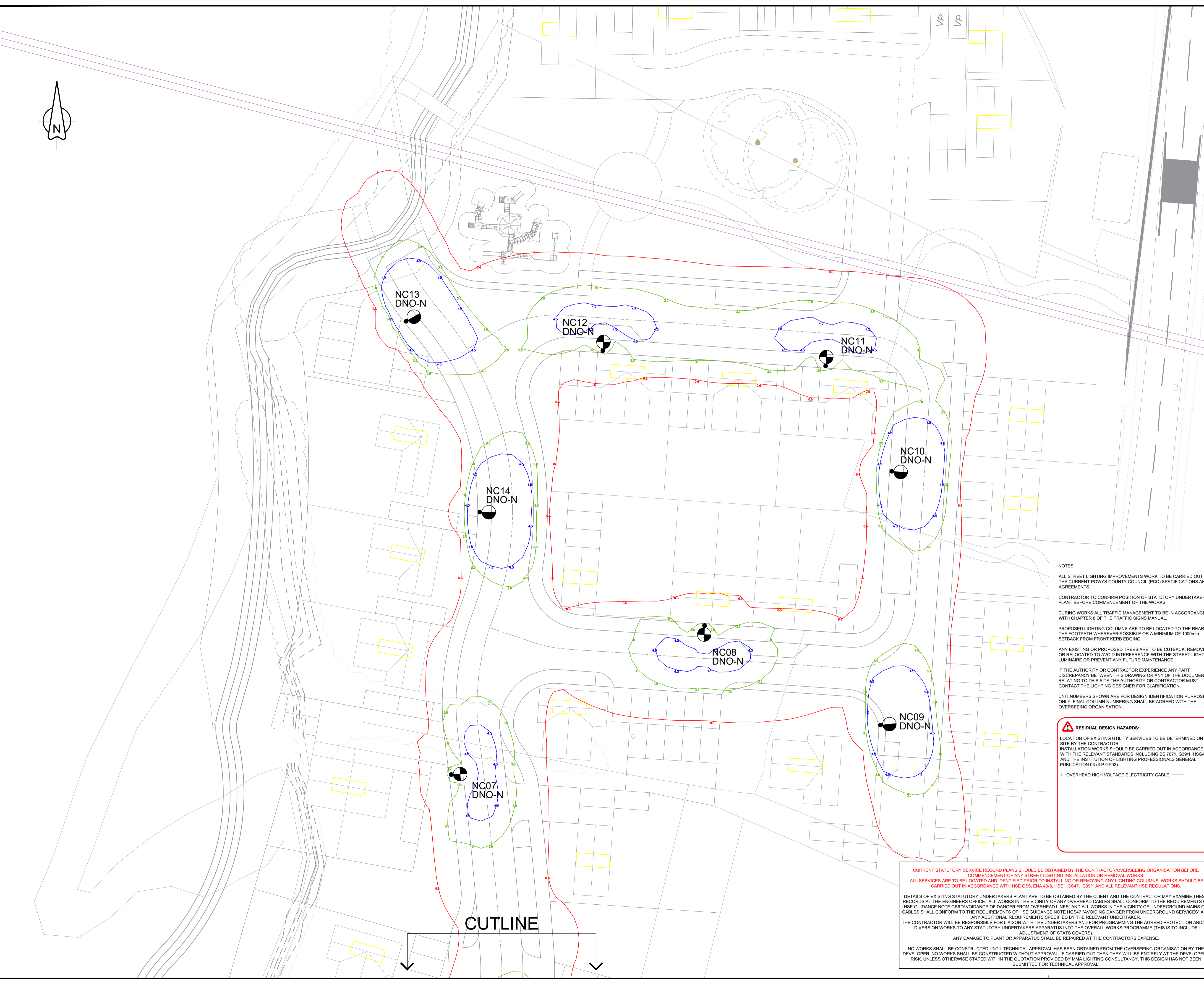
**ALL SERVICES ARE TO BE LOCATED AND IDENTIFIED PRIOR TO INSTALLING OR REMOVING ANY LIGHTING COLUMNS. WORKS SHOULD BE CARRIED OUT IN ACCORDANCE WITH HSE G56, ENA 43&4, HSE HGS47, G3/91 AND ALL RELEVANT HSE REGULATIONS.**

DETAILS OF EXISTING STATUTORY UNDERTAKERS PLANT ARE TO BE OBTAINED BY THE CLIENT AND THE CONTRACTOR MAY EXAMINE THESE RECORDS AT THE ENGINEERS OFFICE. ALL WORKS IN THE VICINITY OF ANY OVERHEAD CABLES SHALL CONFORM TO THE REQUIREMENTS OF HSE GUIDANCE NOTE G56 "AVOIDANCE OF DANGER FROM OVERHEAD LINES" AND ALL WORKS IN THE VICINITY OF UNDERGROUND MAINS OR CABLES SHALL CONFORM TO THE REQUIREMENTS OF HSE GUIDANCE NOTE HGS47 "AVOIDING DANGER FROM UNDERGROUND SERVICES" AND ANY ADDITIONAL REQUIREMENTS SPECIFIED BY THE RELEVANT UNDERTAKER.

THE CONTRACTOR WILL BE RESPONSIBLE FOR LIAISON WITH THE UNDERTAKERS AND FOR PROGRAMMING THE AGREED PROTECTION AND/OR DIVERSION WORKS TO ANY STATUTORY UNDERTAKERS APPARATUS INTO THE OVERALL WORKS PROGRAMME (THIS IS TO INCLUDE ADJUSTMENT OF STAKES COVERS).

ANY DAMAGE TO PLANT OR APPARATUS SHALL BE REPAIRED AT THE CONTRACTORS EXPENSE.

**NO WORKS SHALL BE CONSTRUCTED UNTIL TECHNICAL APPROVAL HAS BEEN OBTAINED FROM THE OVERSEEING ORGANISATION BY THE DEVELOPER. NO WORKS SHALL BE CONSTRUCTED WITHOUT APPROVAL IF CARRIED OUT THEN THEY WILL BE ENTIRELY AT THE DEVELOPER'S RISK. UNLESS OTHERWISE STATED WITHIN THE QUOTATION PROVIDED BY MMA LIGHTING CONSULTANCY, THIS DESIGN HAS NOT BEEN SUBMITTED FOR TECHNICAL APPROVAL.**



REV	AMENDMENT	DATE	INITIAL
R0	INITIAL DESIGN - BASE DRAWING USED '416.065277-SLR-XXX-XXX-DR-CE-0120- General Arrangement Plan'	30/10/2024	BR



**MMA**  
**LIGHTING CONSULTANCY**  
Exterior Lighting Design Specialists

99 Old Bath Road, Summer Field House, Reading, RG10 9QN  
Phone: 0118 321 5638 Email: info@mma-consultancy.co.uk  
www.mma-consultancy.co.uk

<b>Project title</b> VERLON FARM, MONTGOMERY	
<b>Drawing title</b> S38 STREET LIGHTING DESIGN SHEET 2 OF 2	
<b>Prepared by</b> BR	<b>Checked by</b> HC
<b>Scale</b> 1:250 @ A1	<b>Date</b> 30/10/2024
<b>Drawing Number</b> MMA19045/002	<b>Revision Details</b> R0