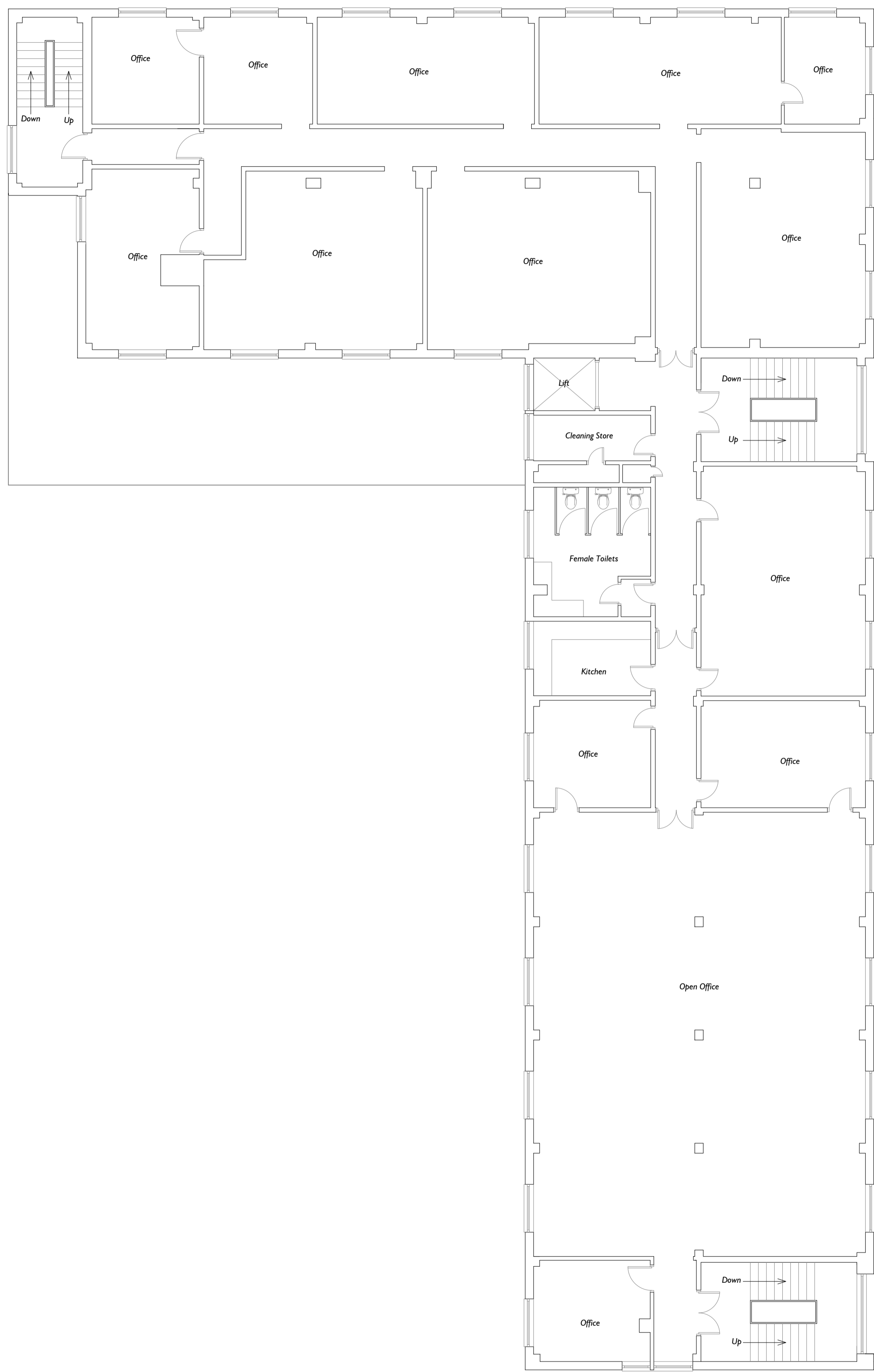


This drawing is COPYRIGHT. It must not be reproduced or disclosed to third parties without our prior permission. Do not scale from this drawing, or interrogate and use electronic information.

Any discrepancies should be reported immediately.

Any surveyed information incorporated within this drawing cannot be guaranteed as accurate unless confirmed by a fixed dimension. All dimensions are in millimetres unless noted otherwise.



**FIRST FLOOR
EXISTING**



**SECOND FLOOR
EXISTING**



NOTE:
Survey carried out by Castle Surveys Ltd. and has not been checked by Hughes Architects for accuracy.

HUGHES
ARCHITECTS

Head Office
29 Broad Street
Newtown
Powsy
SY16 2BQ
t - 01686 610311
w - www.hughesarchitects.co.uk

Project :- Conversion of First and Second Floors to Residential Accommodation, Dolanog House, Severn Rd, Welshpool.			
Drawing Status :- Stage 3A Planning		Drawing Title :- Existing First & Second Floor Plans	
Scale :- 100@A1	Date :- 13.10.23	Drawing No :- X110.3A.1.102	Rev :- A
Rev A - Amended as per planning comments 09.11.23 - LW			
Drawn by :- LW	Checked :- DH		