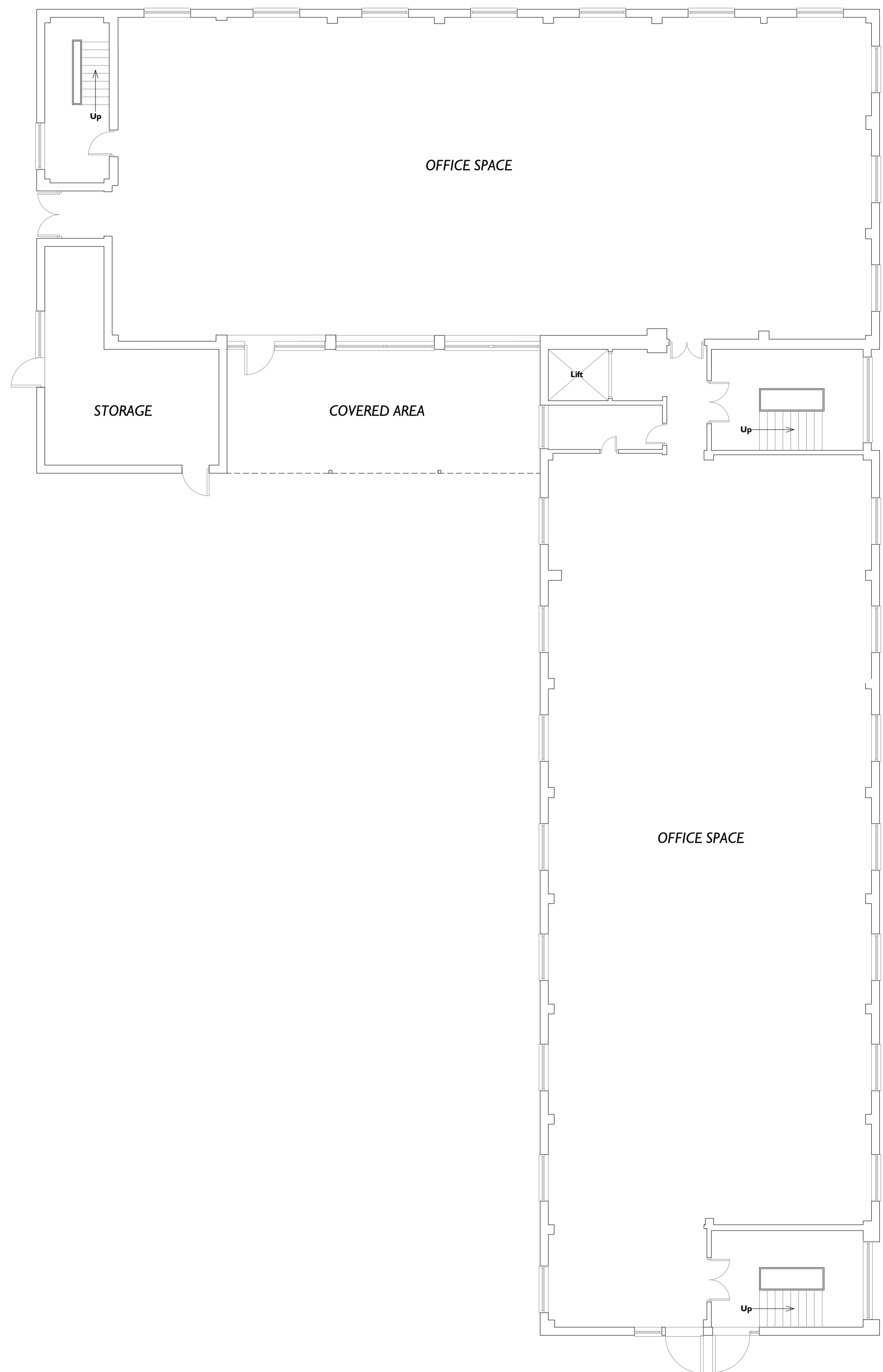


This drawing is COPYRIGHT. It must not be reproduced or disclosed to third parties without our prior permission. Do not scale from this drawing, or interrogate and use electronic information.

Any discrepancies should be reported immediately.

Any surveyed information incorporated within this drawing cannot be guaranteed as accurate unless confirmed by a fixed dimension. All dimensions are in millimetres unless noted otherwise.



**GROUND FLOOR  
AS EXISTING**

0 5m  
SCALE 1:100 @ A1

**NOTE:**  
Survey carried out by Castle Surveys Ltd. and has not been checked by Hughes Architects for accuracy.

Project :-		Conversion of First and Second Floors to Residential Accommodation, Dolanog House, Severn Rd, Welshpool.	
Drawing Status :-		Existing Ground Floor Plan	
Scale :- 1:100 @ A1		Date :- 13.10.23	Rev :- A
Drawing No :-		X110.3A.1.101	
Drawn by :-	LW	Checked :-	DH

Rev A - Amended as per planning comments 09.11.23 - LW

**HUGHES**  
ARCHITECTS

Head Office  
29 Broad Street  
Newtown  
Powys  
SY16 2BQ  
t - 01686 610311  
w - www.hughesarchitects.co.uk